

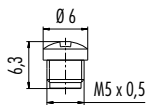
Schutzkappe für Dosen

Protection cap for female connectors

Abbildung / Figure



Maßzeichnung / Drawing



Bestell-Daten / Order Data

| Bestell-Nr. Ordering-No. |
|-----------------------------|
| 08 2610 000 000 |

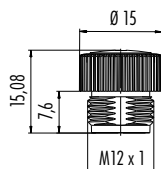
Schutzkappe für Dose, IP67

Protection cap for female connector, IP67

Abbildung / Figure



Maßzeichnung / Drawing



Bestell-Daten / Order Data

| Bestell-Nr. Ordering-No. |
|-----------------------------|
| 08 2769 000 000 |

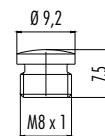
Schutzkappe für Dosen

Protection cap for female connectors

Abbildung / Figure



Maßzeichnung / Drawing



Bestell-Daten / Order Data

| Bestell-Nr. Ordering-No. |
|-----------------------------|
| 08 2441 000 000 |

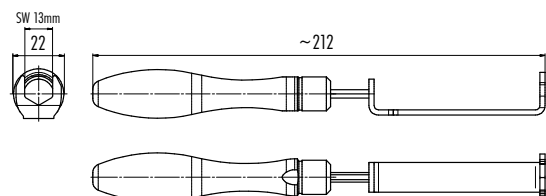
Schlüssel mit Drehmomentbegrenzung Sechskant SW 13, 0,6 Nm

Hexagon torque spanner SW 13, 0,6 Nm

Abbildung / Figure



Maßzeichnung / Drawing

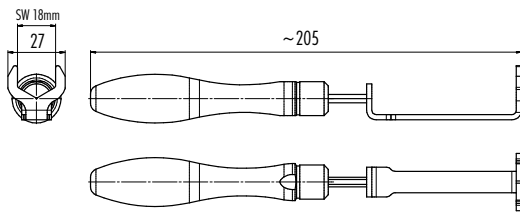


Bestell-Daten / Order Data

| Bestell-Nr. Ordering-No. |
|-----------------------------|
| 07 0086 000 |

Schlüssel mit Drehmomentbegrenzung, Sechskant SW 18, 0,6 Nm
Hexagon torque spanner SW 18, 0,6 Nm

Abbildung / Figure



Bestell-Daten / Order Data

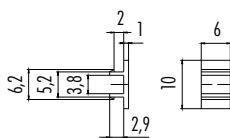
| Bestell-Nr. Ordering-No. |
|-----------------------------|
| 07 0079 000 |

Bezeichnungsschild für M8 Verteiler
Label for M8 interface box

Abbildung / Figure



Maßzeichnung / Drawing



Bestell-Daten / Order Data

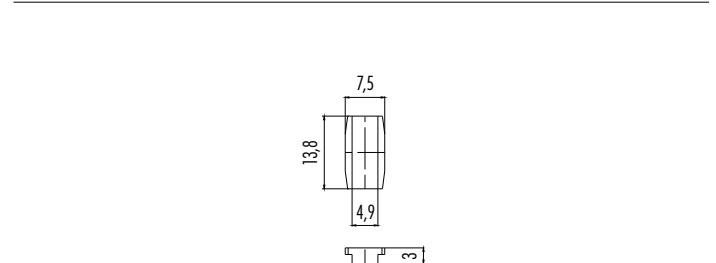
| Bestell-Nr. Ordering-No. |
|-----------------------------|
| 16 0796 000 |

Montageschlüssel zur Montage von M12 Verriegelungsring
Mounting tool for M12 locking ring



| Bestell-Nr. Ordering-No. |
|-----------------------------|
| 07 0078 000 |

Bezeichnungsschild für M12 Verteiler
Label for M12 interface box



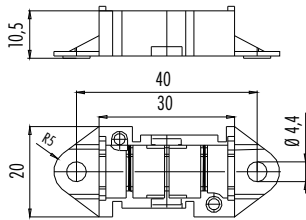
| Bestell-Nr. Ordering-No. |
|-----------------------------|
| 16 0809 000 |

Klemmenunterteil für Flachkabel mit Befestigungslaschen
 Fixing straps for flat cable with lower part for connectors for distribution

Abbildung / Figure



Maßzeichnung / Drawing



Bestell-Daten / Order Data

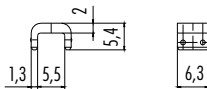
| Bestell-Nr. Ordering-No. |
|-----------------------------|
| 16 0810 000 |

Befestigungsclip zur Anreihung von Klemmen
 Fixing clip to add further connectors for distribution

Abbildung / Figure



Maßzeichnung / Drawing



Bestell-Daten / Order Data

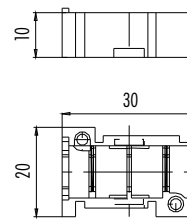
| Bestell-Nr. Ordering-No. |
|-----------------------------|
| 02 0208 000 |

Klemmenunterteil für Flachkabel ohne Befestigungslaschen
 Fixing straps for flat cable without lower part for connectors for distribution

Abbildung / Figure



Maßzeichnung / Drawing



Bestell-Daten / Order Data

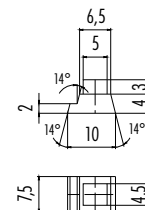
| Bestell-Nr. Ordering-No. |
|-----------------------------|
| 16 0811 000 |

Flachkabeldichtung für Klemmen, (Kabel wird nicht durchgeführt)
 Flat cable seal for connectors for distribution (cable will not be lead through)

Abbildung / Figure



Maßzeichnung / Drawing



Bestell-Daten / Order Data

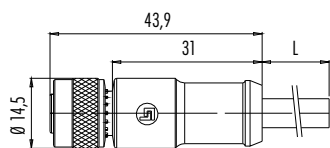
| Bestell-Nr. Ordering-No. |
|-----------------------------|
| 16 0792 000 |

Kabeldose M12, 12-polig für M5 4/8-fach Verteiler
 Female cable connector M12, 12 contacts for M5 4/8-way interface box

Abbildung / Figure



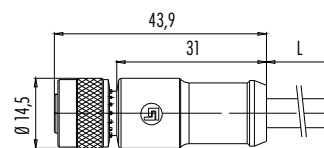
Maßzeichnung / Drawing



Bestell-Daten / Order Data

| Kabellänge Cable length | Bestell-Nr. Ordering-No. |
|----------------------------|-----------------------------|
| 2 m | 79 3490 970 12 |
| 5 m | 79 3490 480 12 |

Kabeldose M12, 6-polig für M8 4-fach Verteiler, PUR
 Female cable connector M12, 6 contacts for M8 4-way interface box, PUR



Bestell-Daten / Order Data

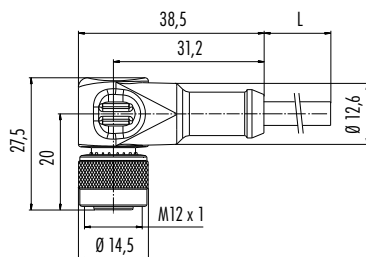
| Kabellänge Cable length | Bestell-Nr. Ordering-No. |
|----------------------------|-----------------------------|
| 2 m | 79 3480 970 08 |
| 5 m | 79 3480 480 08 |

Winkeldose M12, 6-polig für M8 4-fach Verteiler, PUR
 Female angled connector M12, 6 contacts for M8 4-way interface box, PUR

Abbildung / Figure



Maßzeichnung / Drawing



Bestell-Daten / Order Data

| Kabellänge Cable length | Bestell-Nr. Ordering-No. |
|----------------------------|-----------------------------|
| 2 m | 79 3484 970 08 |
| 5 m | 79 3484 480 08 |

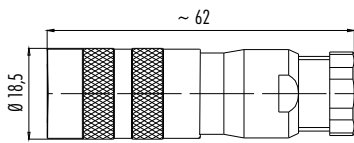
| |
|--|
| |
| |

Kabeldose M16 mit Schirmring, 14-polig mit 2 Adaptoren für 0,5mm² für M8 4/8-fach Verteiler
 Female cable connector M16 with shielding, 14 contacts with 2 adapters for 0,5mm² for M8 4/8-way interface box

Abbildung / Figure



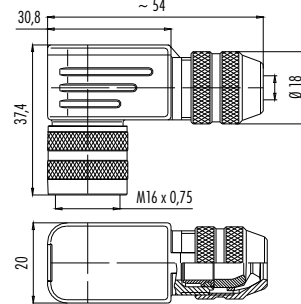
Maßzeichnung / Drawing



Bestell-Daten / Order Data

| Kabeldurchlass Cable outlet | Bestell-Nr. Ordering-No. |
|--------------------------------|-----------------------------|
| 6–8 mm | 99 5652 34 14 |

Winkeldose M16 mit Schirmring, 14-polig mit 2 Adaptoren für 0,5mm² für M8 4/8-fach Verteiler
 Female angled connector M16 with shielding, 14 contacts with 2 adapters for 0,5mm² for M8 4/8-way interface box



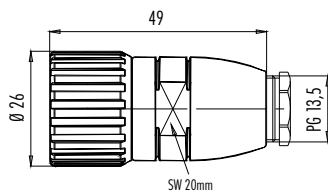
| Kabeldurchlass Cable outlet | Bestell-Nr. Ordering-No. |
|--------------------------------|-----------------------------|
| 6–8 mm | 99 5652 35 14 |

Kabeldose M23, 12-polig für M12 Verteiler
 Female cable connector M23, 12 contacts for M12 interface box

Abbildung / Figure



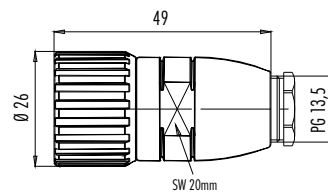
Maßzeichnung / Drawing



Bestell-Daten / Order Data

| Kabeldurchlass Cable outlet | Bestell-Nr. Ordering-No. |
|--------------------------------|-----------------------------|
| 8–11 mm | 99 4606 15 12 |

Kabeldose M23, 19-polig für M12 Verteiler
 Female cable connector M23, 19 contacts for M12 interface box



| Kabeldurchlass Cable outlet | Bestell-Nr. Ordering-No. |
|--------------------------------|-----------------------------|
| 8–11 mm | 99 4632 15 19 |

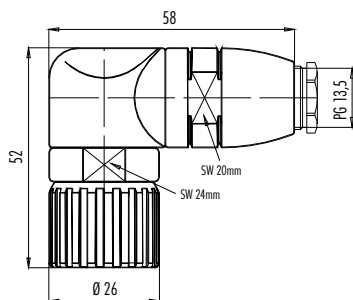
Winkeldose M23, 12-polig für M12 Verteiler

Female angled connector M23, 12 contacts for M12 interface box

Abbildung / Figure



Maßzeichnung / Drawing

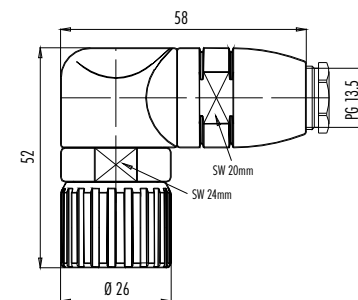


Bestell-Daten / Order Data

| Kabeldurchlass Cable outlet | Bestell-Nr. Ordering-No. |
|--------------------------------|-----------------------------|
| 8–11 mm | 99 4606 75 12 |

Winkeldose M23, 19-polig für M12 Verteiler

Female angled connector M23, 19 contacts for M12 interface box



| Kabeldurchlass Cable outlet | Bestell-Nr. Ordering-No. |
|--------------------------------|-----------------------------|
| 8–11 mm | 99 4632 75 19 |

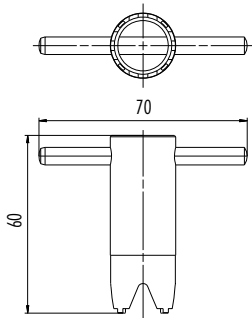
Montageschlüssel für M23 Steckverbinder

Mounting spanner for M23 connectors

Abbildung / Figure



Maßzeichnung / Drawing



Bestell-Daten / Order Data

| Bestell-Nr. Ordering-No. |
|-----------------------------|
| 08 1205 000 000 |

| Bestell-Nr. Ordering-No. |
|-----------------------------|
| |